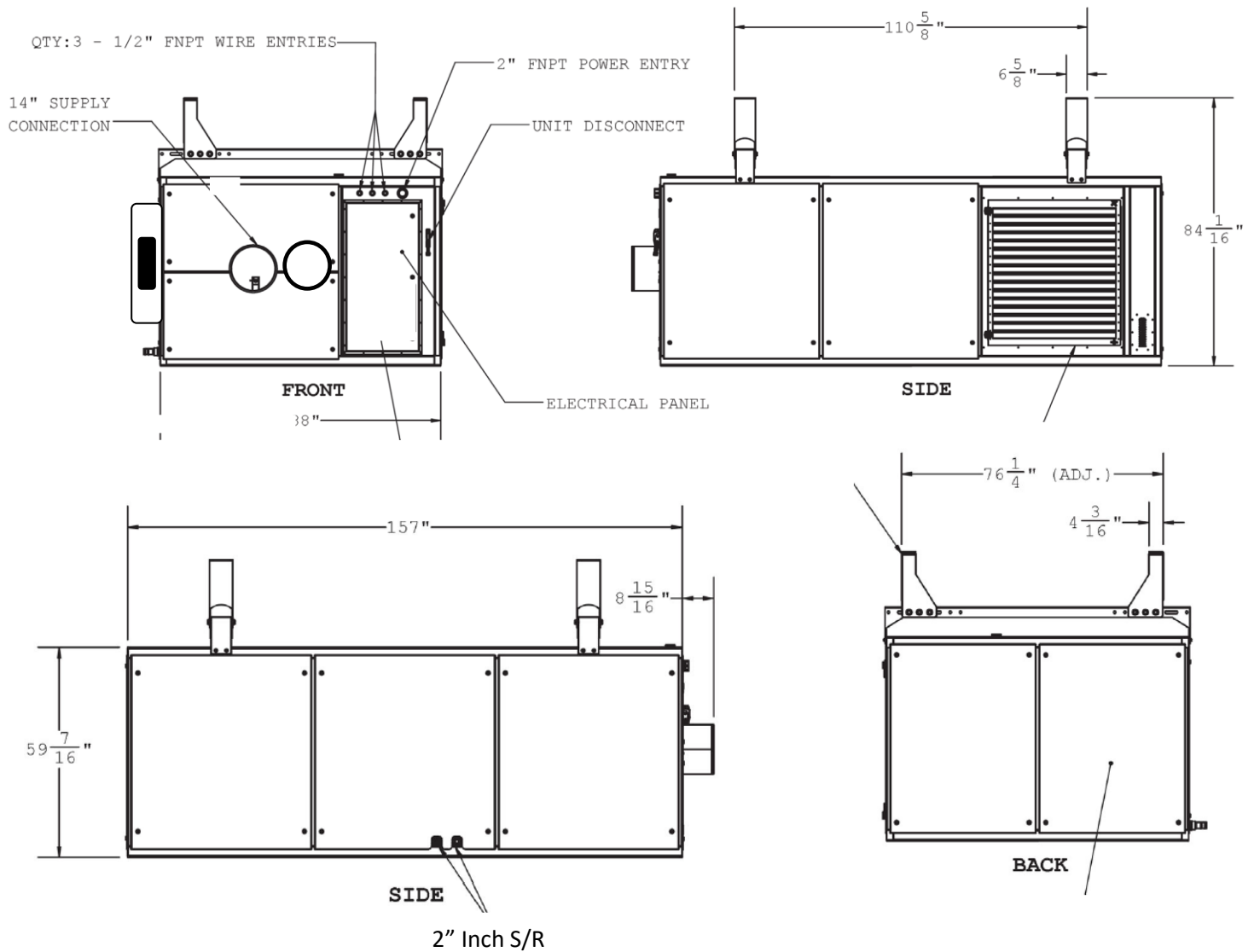


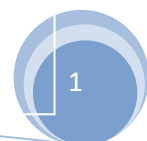


90 Ton EGW AHU for Central Systems



Exclusive Worldwide Distributor

BGSE GROUP LLC
 14034 Clarendon Point Court
 Huntersville, NC 28078
 United States of America
 Bryan Bullerdick
 President
 +1 (704) 488-0084
 bryan@bgsegroupp.com



90 Ton EGW AHU for Central Systems

ELECTRICAL

Rated @ 60 Hz @ design conditions

Airflow

Voltage / Frequency

Unit Breaker (Cooling Only)

90 Tons

488 PPM @ 28In WG

480 V / 3P / 60 Hz

RLA 90 /120 Breaker

AMBIENT DESIGN

Dry bulb

95.0°F

Wet Bulb

78.0°F

Relative Humidity

47.3%

Enthalpy

41.30 Btu/Lbs.

HEATER / OPTIONS

Heater (Optional) 30 KW and 50% airflow

RLA 80 / 100 Breaker

Heater (Optional) 36 KW and 50% Airflow

RLA105/ 125 Breaker

Heater (Optional) 56 KW and 50% Airflow

RLA113/ 150 Break-

DIMENSIONS / WEIGHTS

Length

157 in (3,988 mm)

Width

88 in (2235 mm)

Height

61 in (1549 MM)

Weight

32,00 lbs. / 1,451 Kg

CONTROL SYSTEM

PLC with MODBUS

Pushbuttons

Fill LCD Display

AIRFLOW

Blower Motor

60 BHP TEFC

Mass Airflow Variable

488 ppm @ 28 in WG

Volumetric Airflow

6,506 CFM

Discharge Air (Variable)

24°F to 120°F¹

COIL(S)

EGW Supply Temp Range

20°F - 150°F

Maximum EGW Flow Rate

60 GPM

Maximum Pressure Drop

54 PSI

EGW ΔT at Max Design

38°F

Copper Tube Aluminum Fin built in accord with AHRI-410

CERTIFICATIONS:

- Wind Velocity: 155 mph (ASCE 7-16)
- Standards Referenced: ASCE 7-16
- AISC Manual of Steel Construction
- ELI Certified to UL-1995
- ARI-410



Northern-Air
S y s t e m s

3605 BUFFALO RD
ROCHESTER, NY 14624
United States of America
Phone: +1-585-594-5050
Fax: +1-585-594-8888
24 Hours Toll Free: +1-888-723-9230
ISO 9001 Certified
www.northernairsystems.com



Exclusive Worldwide Distributor

BGSE GROUP LLC
14034 Clarendon Point Cou
Huntersville, NC 28078
United States of America
Bryan Bullerdick
President
+1 (704) 488-0084
bryan@bgsegroupp.com

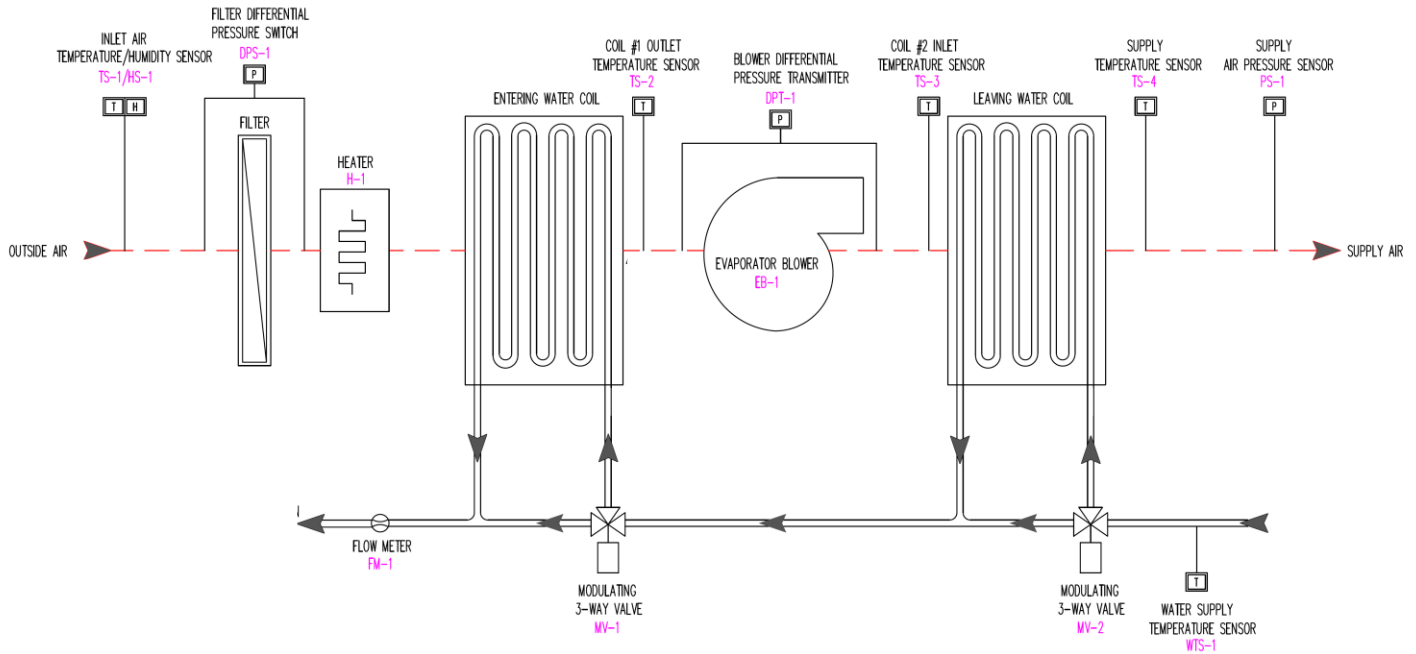


¹ If equipped with optional heat Meets Airbus Compliance Document for Suppliers X21RP1146224_v7 Boeing Aircraft Maintenance Manuals (AMM) and Facility Planning Guides IATA AHM 974 and IATA AHM 997

GENERAL ARRANGEMENT OF BGSE GROUP's EGW AHU's FOR CENTRAL SYSTEMS

Separating the above freezing "intake Coil" from the sub-freezing "discharge coil" is a "KEY design benefit.

Dual modulating 3-Way control valves allow each coil to be maintained at a perfect temperature for optimum performance



Exclusive Worldwide Distributor

BGSE GROUP LLC
14034 Clarendon Point Court
Huntersville, NC 28078
United States of America
Bryan Bullerick
President
+1 (704) 488-0084
bryan@bgsegroup.com

