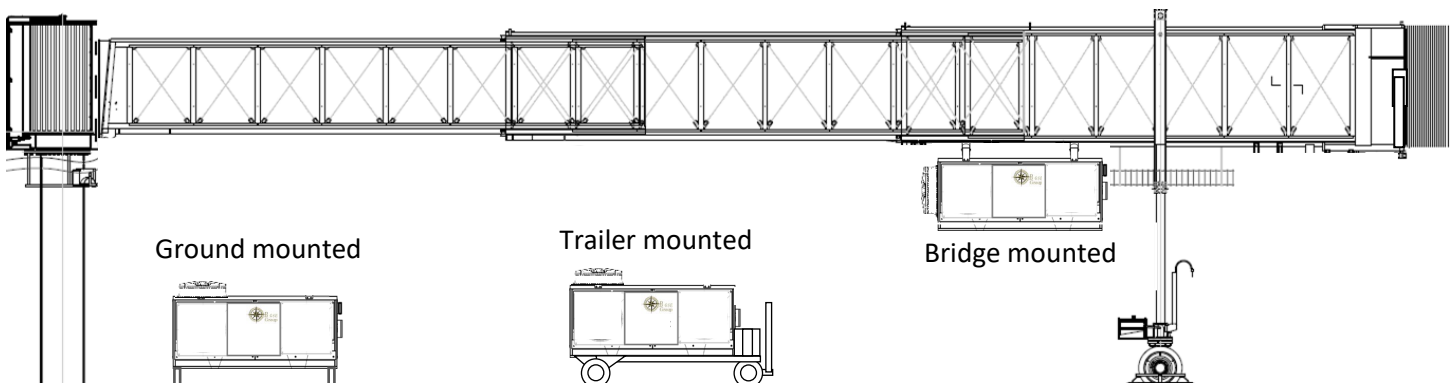
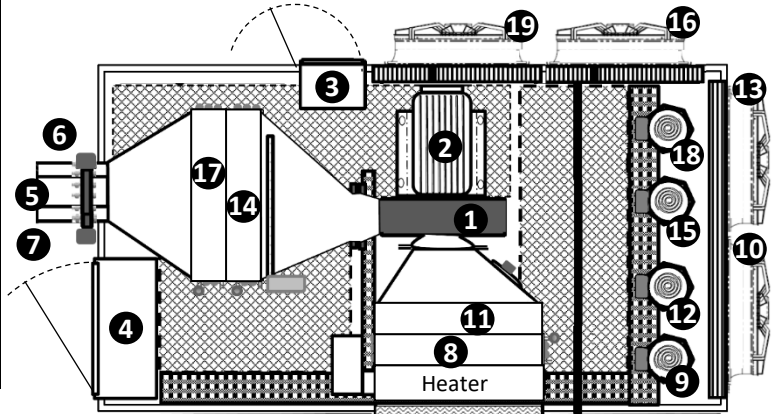


# PoU PCAir Air Cooled, Direct Expansion

- ✦ Built with the quality to last decades
- ✦ Cooling and heating performance exceeding aircraft requirements
- ✦ Customer-focused features and options, like Ionized air filtration and minimized defrost cycles



	BGAC030	BGAC045	BGAC060	BGAC090	BGAC120
1 Blower	20-hp	30-hp	40-hp	60-hp	80-hp
2 TEFC blower motor	✓	✓	✓	✓	✓
3 Blower motor VFD	✓	✓	✓	✓	✓
4 Electrical Box	✓	✓	✓	✓	✓
5 Main Air Outlet	✓	✓	✓	✓	✓
6 Optional PBB Cool Outlet	✓	✓	✓	✓	✓
7 Optional 2 <sup>nd</sup> Air Outlet			✓	✓	✓
8 Stage 1 Cooling Coil	15-ton	15-ton	15-ton	15-ton	30-ton
9 Stage 1 Compressor	15-ton	15-ton	15-ton	15-ton	30-ton
10 Condenser Fan					
11 Stage 2 Cooling Coil		15-ton	15-ton	15-ton	30-ton
12 Stage 2 Compressor		15-ton	15-ton	15-ton	30-ton
13 Condenser Fan					
14 Stage 3 Cooling Coil		15-ton	15-ton	30-ton	30-ton
15 Stage 3 Compressor					
16 Condenser Fan					
17 Stage 4 Cooling Coil			15-ton	30-ton	30-ton
18 Stage 4 Compressor					
19 Condenser Fan					



**Northern-Air**  
systems  
3605 BUFFALO RD  
ROCHESTER, NY 14624  
United States of America  
Phone: +1-585-594-5050  
Fax: +1-585-594-8888  
24 Hours Toll Free: +1-888-723-9230  
www.northernairsystems.com



Exclusive Worldwide Distributor

BGSE GROUP LLC  
14034 Clarendon Point Court  
Huntersville, NC 28078  
United States of America  
+1 (704) 488-0084  
sales@bgsegroup.com

# PoU PCAir Air Cooled, Direct Expansion



<b>Design Ambient:</b>	95°F (35.0°C) dry bulb 78.0°F (25.6°C) wet bulb		<b>Ambient limits:</b> -40°F to +125°F 0%-100% RH		
	<b>BGAC030 30-ton</b>	<b>BGAC045 45-ton</b>	<b>BGAC060 60-ton</b>	<b>BGAC090 90-ton</b>	<b>BGAC120 120-ton</b>
<b>Electrical</b> (V / $\phi$ / Hz)	480 V / 3 Ph / 60 Hz				
Cooling FLA / MCA	88 A / 95 A	135 A / 143 A	179 A / 189 A	257 A / 273 A	335 A / 356 A
Cooling ROP / MOP	100 A / 125 A	150 A / 175 A	200 A / 225 A	300 A / 350 A	400 A / 450 A
Standard Heater	36 kW	54 kW	54 kW	60 kW	90 kW
Large Heater - MCA	54 kW – 107 A	100 kW – 193 A	100 kW – 205 A	120 kW – 264 A	144 kW – 326 A
ROP / MOP	110A / 125 A	200 A / 200 A	225 A / 225 A	300 A / 350 A	400 A / 450 A
per NEC 440.33 ROP = Recommended Overcurrent Protection device based on soft-start blower. MOP = largest overcurrent protection device allowed.					
<b>Blower</b> (hp, type)	20 BHP, Centrifugal	30 BHP, Centrifugal	40 BHP, Centrifugal	60 BHP, Centrifugal	80 BHP, Centrifugal
Mass Airflow (Variable)	180 ppm @ 24 "WG	284 ppm @ 28 "WG	340 ppm @ 30 "WG	480 ppm @ 36 "WG	588 ppm @ 42 "WG
Mass Airflow (Variable)	1.36 kg/s @ 6.1 kPa	2.15 kg/s @ 7.1 kPa	2.57 kg/s @ 7.6 kPa	3.63 kg/s @ 9.2 kPa	4.45 kg/s @ 10.7 kPa
Volumetric Airflow	2,430 CFM (4126 m <sup>3</sup> /h)	3,830 CFM (6510 m <sup>3</sup> /h)	4,590 CFM (7790 m <sup>3</sup> /h)	6,480 CFM (11,000 m <sup>3</sup> /h)	7,940 CFM (13,480 m <sup>3</sup> /h)
Discharge Air Temp	24 to 40°F (-7.2 to 4.4 °C)				
Sound Level	85 dBA @ 15 Ft.				
<b>Evaporator Coils</b>	4-row				
Tube / Fin Material	Cu / Al (enhanced)				
Defrost interval	20-90 Min.				
<b>Compressors</b>	2 x 15 Tons, Scroll	3 x 15 Tons, Scroll	4 x 15 Tons, Scroll	2 x 15, 2 x 30, Scroll	4 x 30 Tons, Scroll
Refrigerant	410A				
<b>Condenser Coils</b>	4-row				
Tube / Fin Material	Cu / Al (enhanced)				
<b>Condenser Fans</b>	2 x 5 BHP	3 x 5 BHP	4 x 5 BHP	4 x 7.5 BHP	4 x 10 BHP
Diameter	36 in (905 mm)	36 in (905 mm)	36 in (905 mm)	36 in (905 mm)	36 in (905 mm)

Meets Airbus Compliance Document for Suppliers X21RP1146224\_v7, Boeing Aircraft Maintenance Manuals (AMM) and Facility Planning Guides IATA AHM 974 and IATA AHM 997, AHRI-410. Labeling Process by ETL to UL-1995. Specifications subject to change without notice.

## Optional Features:

- Single or Dual Hose Outlets + Bridge Cool
- Apron Management System Interface (Ethernet or Modbus)
- Boarding Bridge Cooling / Heating and Controls
- Delivery Hose (style / length) and Connectors
- Hose Storage and Retrieval Systems
- Coil Phenolic Coating
- Condenser Fan Motor VFDs
- Standard and High-Capacity Heating Coils
- Aircraft Cabin or Bridge Temperature Probes
- Ionizing Air Filter for microbe and odor control

**Northern-Air**  
S y s t e m s

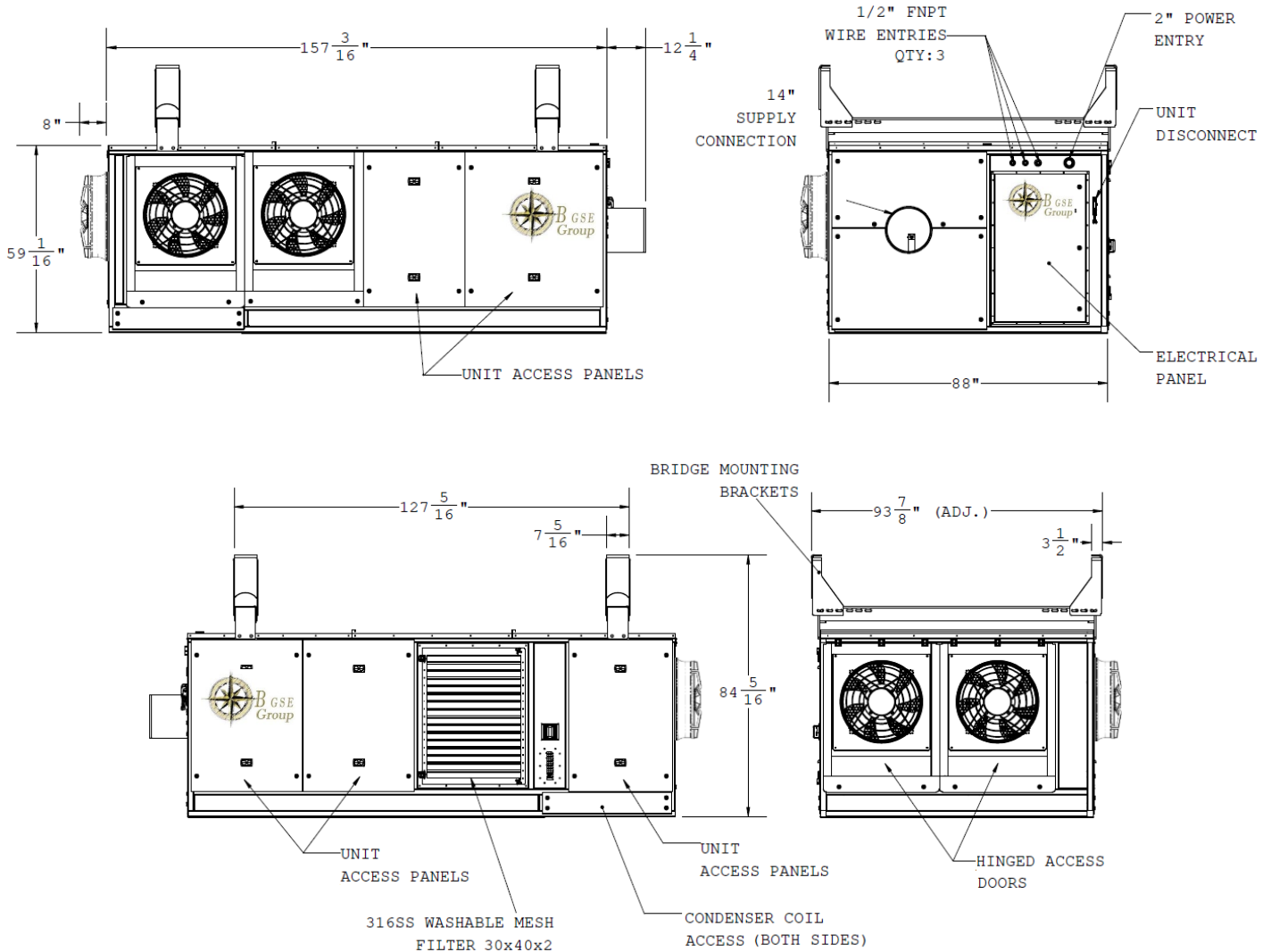
3605 BUFFALO RD  
ROCHESTER, NY 14624  
United States of America  
Phone: +1-585-594-5050  
Fax: +1-585-594-8888  
24 Hours Toll Free: +1-888-723-9230  
www.northernairsystems.com



## Exclusive Worldwide Distributor

BGSE GROUP LLC  
14034 Clarendon Point Court  
Huntersville, NC 28078  
United States of America  
+1 (704) 488-0084  
sales@bgsegroup.com

# PoU PCAir Air Cooled, Direct Expansion



## Weight

30-ton <sup>1</sup>	3,735 lbs. (1,694 kg)
45-ton <sup>1</sup>	4,925 lbs. (2,234 kg)
60-ton <sup>1,2</sup>	5,285 lbs. (2,561 kg)
90-ton <sup>1,3</sup>	8,680 lbs. (3,937 kg)
120-ton <sup>1,3</sup>	11,074 lbs. (5,023 kg)

Condenser fans:

- <sup>1</sup> Qty 2, rear-mounted
- <sup>2</sup> Qty 1, side-mounted
- <sup>3</sup> Qty 2, side-mounted

## Exclusive Worldwide Distributor



BGSE GROUP LLC  
 14034 Clarendon Point Court  
 Huntersville, NC 28078  
 United States of America  
 +1 (704) 488-0084  
 sales@bgsegroup.com



## BGSE-150-IOM Ionization Filter

### Product Description

The BGSE-150-IOM is an autocleaning, no maintenance, needlepoint bipolar ionization system designed to handle up to 150 tons of airflow. The unit is designed for multiple mounting options including fan inlet, interior duct wall or interior duct floor. The all-composite and carbon fiber construction allows the product to be mounted in corrosive environments.

### Standard Features

Universal voltage input, in-line On/Off switch, programmable auto-cleaning cycle, plasma on indication light, alarm contacts, magnets for ease of installation and replaceable carbon fiber brush emitters\*.

\*Life cycle testing shows no mechanical degradation of the carbon fiber brushes due to repeated cleaning cycles

### Benefits



**Kills Pathogens (Bacteria, Viruses, Mold), Helps to Control Allergens/ Asthma**



**Neutralizes Odors by destroying VOCs**



**Reduces Particles and Smoke\***

\*These statements are based on numerous customer testimonials and have not been evaluated by the FDA.

### Specifications

Input Voltage	24VAC to 240VAC
Amps	0.41A to 0.041A
Power	10 Watts
Frequency	50/60HZ
Total Ion Output	> 400 Million ions/cc/sec
Airflow Capacity	Up to 150 tons of airflow
Temperature/Humidity	-20°F to 200°F / 0-100% RH
Unit Dimensions/Weight	11.1"L x 1.84"W x 3.52"H / 1.32 lbs
Electrical Listings	UL, cUL, CE
Alarm Contact Rating	250VAC/ 1A
Compliance & Certifications	UL 867, OSHPD Seismic (OSP), IAQP



The BGSE-150-IOM is designed to be maintenance free, thanks to the patent-pending self-cleaning system.

Installation and adjustments are easily accomplished with the auto-detecting universal voltage input module, and the magnetic mounting tabs that allow tool-less mounting and repositioning in the ductwork.

### Exclusive Worldwide Distributor



BGSE GROUP LLC  
14034 Clarendon Point Court  
Huntersville, NC 28078  
United States of America  
+1 (704) 488-0084  
sales@bgsegroup.com