

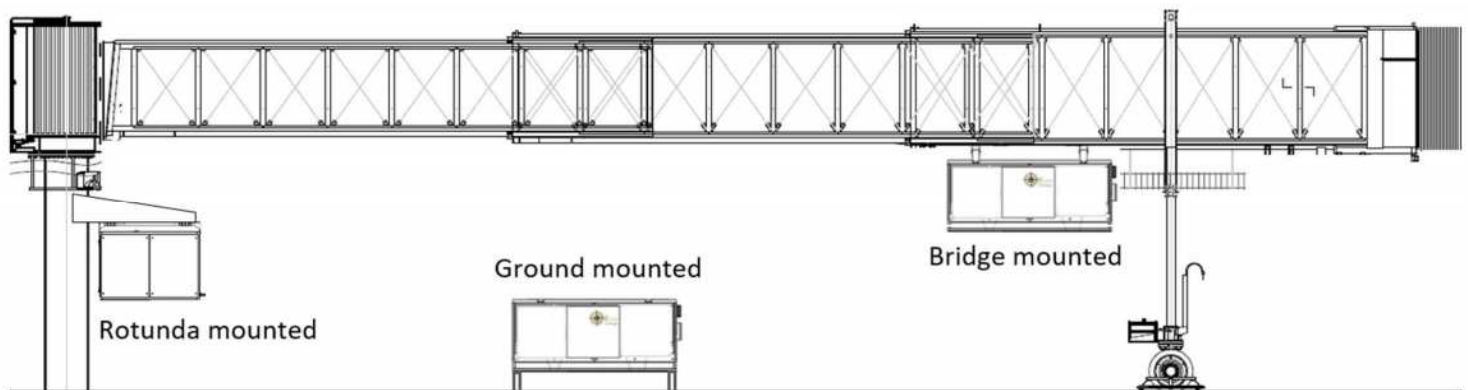
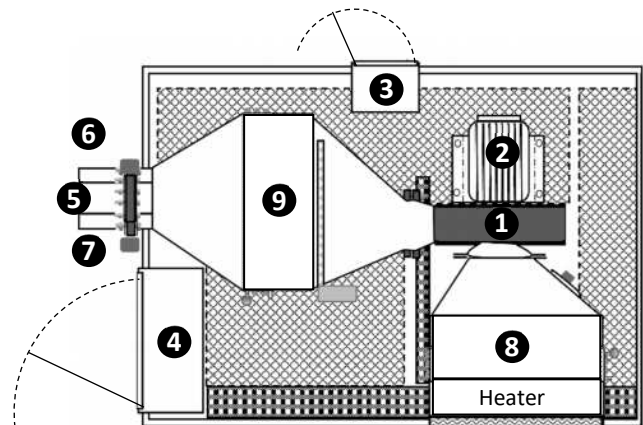
AHU PCAir Chilled Water / Glycol



- ✦ Built with the quality to last decades
- ✦ Cooling and heating performance exceeding aircraft requirements
- ✦ Customer-focused features and options, like Ionized air filtration and minimized defrost cycles



	BGAC030A	BGAC045A	BGAC060A	BGAC090A	BGAC120A
❶ Blower	20-hp	30-hp	50-hp	60-hp	80-hp
❷ TEFC Blower Motor	✓	✓	✓	✓	✓
❸ Blower Motor VFD	✓	✓	✓	✓	✓
❹ Electrical Box	✓	✓	✓	✓	✓
❺ Main Air Outlet	✓	✓	✓	✓	✓
❻ Optional PBB Cool Outlet	✓	✓	✓	✓	✓
❼ Optional 2 nd Air Outlet			✓	✓	✓
❽ Stage 1 Cooling Coil	✓	✓	✓	✓	✓
❾ Stage 2 Cooling Coil	✓	✓	✓	✓	✓



BGSE GROUP LLC
14034 Clarendon Point Court
Huntersville, NC 28078
United States of America
+1 (704) 488-0084
sales@bgsegroupp.com

AHU PCAir Chilled Water / Glycol

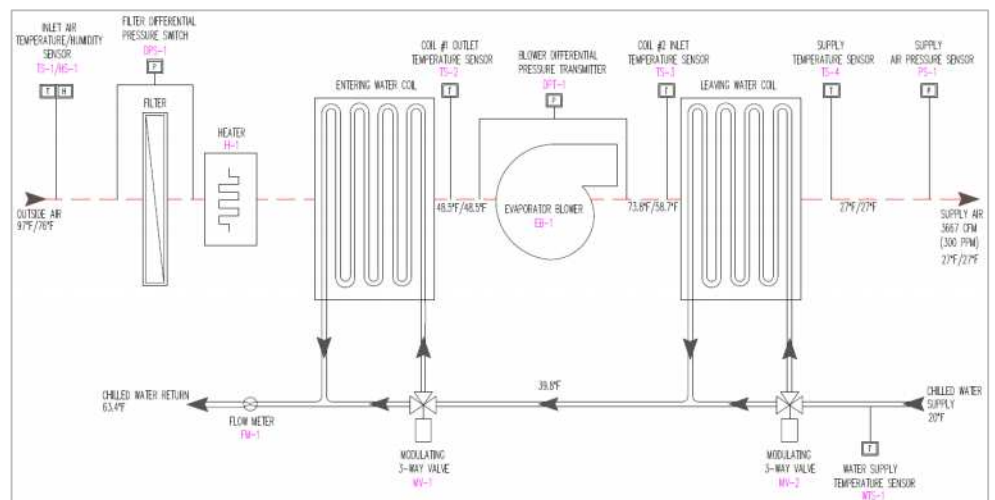


Design Ambient:	95°F (35.0°C) dry bulb 78.0°F (25.6°C) wet bulb		Ambient limits: -40°F to +125°F 0%-100% RH		
	BGAC030A 30-ton	BGAC045A 45-ton	BGAC060A 60-ton	BGAC090A 90-ton	BGAC120A 120-ton
Electrical per NEC 440.33	480 V / 3P / 60 Hz		480 V / 3P / 60 Hz		480 V / 3P / 60 Hz
Cooling Amps MCA / MOP	34 A / 60 A		78 A / 150 A		123 A / 225 A
Recommended fuse (ROP)	50 A		90 A		150 A
Heater Options	30 kW 36 kW	30 kW 36 kW	30 kW 36 kW	36 kW 56 kW	36 kW 56 kW
Heater Amps MCA / MOP	79 / 90 88 / 100	94 / 125 103 / 125	124 / 175 133 / 175	148 / 225 178 / 250	177 / 300 207 / 300
Recommended fuse (ROP)	90 A 100 A	100 A 110 A	150 A 150 A	175 A 200 A	200 A 225 A
ROP = Recommended Overcurrent Protection device based on soft-start blower. MOP = largest overcurrent protection device allowed.					
Blower	Centrifugal		Centrifugal		Centrifugal
Motor Hp	20 BHP		50 BHP		80 BHP
Mass Airflow (Variable)	180 ppm @ 24 "wg		340 ppm @ 30 "wg		588 ppm @ 42 "wg
Mass Airflow (Variable)	1.36 kg/s @ 6.1 kPa		2.57 kg/s @ 7.6 kPa		4.45 kg/s @ 10.7 kPa
Volumetric Airflow	2,430 CFM 4,126 m³/h		4,590 CFM 7,790 m³/h		7,940 CFM 13,480 m³/h
Discharge Air Temp	24 to 40°F (-7.2 to 4.4 °C)		24 to 40°F (-7.2 to 4.4 °C)		24 to 40°F (-7.2 to 4.4 °C)
Sound Level	85 dBA @ 15 Ft.		85 dBA @ 15 Ft.		85 dBA @ 15 Ft.
Cooling Coils	8-row, tube/fin		8-row, tube/fin		8-row, tube/fin
EGW Ent. Temp / Flow	20°F / 18 gpm		20°F / 30 gpm		20°F / 80 gpm
Max. Pressure Drop	18 psig		60 psig		74 psig
Defrost interval	60-90 Min		60-90 Min		60-90 Min

Meets Airbus Compliance Document for Suppliers X21RP146224_v7, Boeing Aircraft Maintenance Manuals (AMM) and Facility Planning Guides, IATA AHM 974 and IATA AHM 997, AHRI-410. Labeling Process by ETL to UL-1995. Specifications subject to change without notice.

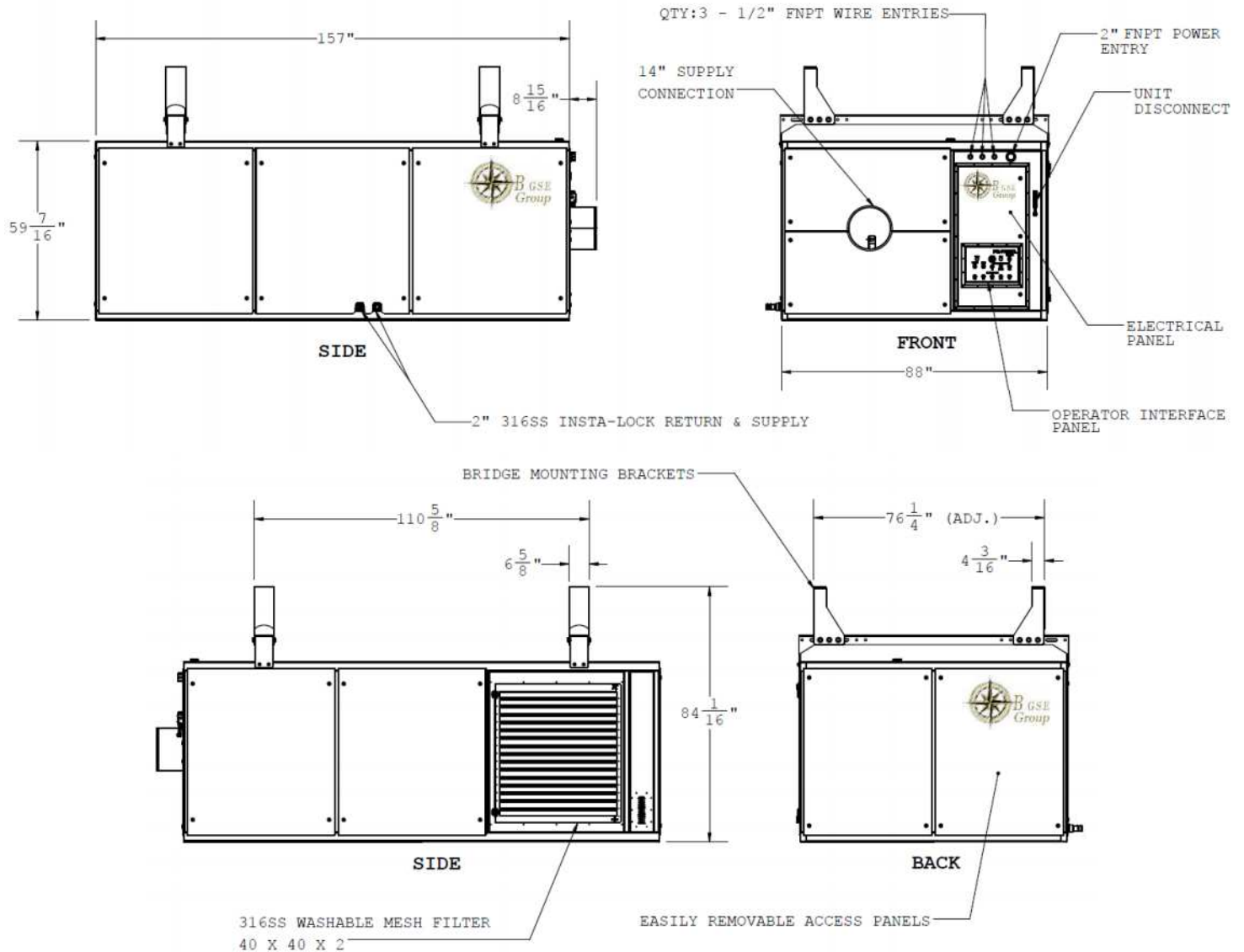
Optional Features:

- Single or Dual Hose Outlets + Bridge Cool
- Apron Management System Interface (Ethernet or Modbus)
- PBB Cooling / Heating and Controls
- Delivery Hose (style / length) and Connectors
- Hose Storage and Retrieval Systems
- Condenser Fan Motor VFDs
- Standard and High-Capacity Heating Coils
- Aircraft Cabin or PBB Temperature Probes
- Ionization Filter for microbe & odor control



BGSE GROUP LLC
14034 Clarendon Point Court
Huntersville, NC 28078
United States of America
+1 (704) 488-0084
sales@bgsegroup.com

AHU PCAir Chilled Water / Glycol



Dimensions / Weight

157 in (3988 mm) L x 88 in (2235 mm) W x 60 in (1524 mm) H

Weight (30-ton) 2,700 lbs. (1,225 kg)

Weight (45-ton) 2,700 lbs. (1,225 kg)

Weight (60-ton) 2,900 lbs. (1,315 kg)

Weight (90-ton) 3,200 lbs. (1,451 kg)

Weight (120-ton) 4,600 lbs. (2,087 kg)



BGSE GROUP LLC
14034 Clarendon Point Court
Huntersville, NC 28078
United States of America
+1 (704) 488-0084
sales@bgsegroup.com



BGSE-150-BPIM Bi-Polar Ionization System

Product Description

The BGSE-150-BPIM is an autocleaning, zero-maintenance, needlepoint bipolar ionization system designed to handle up to 150 tons of airflow. The **generated ions kill microbes and destroy odors in the airstream and the conditioned space.**

Features

All-composite and carbon fiber construction, universal voltage input, in-line On/Off switch, programmable auto-cleaning cycle, plasma on indication light, alarm contacts, mounting magnets and replaceable carbon fiber brush emitters*.

*Life cycle testing shows no mechanical degradation of the carbon fiber brushes due to repeated cleaning cycles

Options

Ion detector for one-time or real-time confirmation of delivered free ions, and BAS communication of system status.

Benefits



Kills Pathogens (Viruses, Bacteria, Mold), Helps to Control Allergens/Asthma



Neutralizes Odors by destroying VOCs



Reduces Particles and Smoke*

*These statements are based on numerous customer testimonials and have not been evaluated by the FDA.

Specifications

Input Voltage	24VAC to 240VAC
Amps	0.41A to 0.041A
Power	10 Watts
Frequency	50/60HZ
Total Ion Output	> 400 Million ions/cc/sec
Airflow Capacity	Up to 150 tons of airflow
Temperature/Humidity	-20°F to 200°F / 0-100% RH
Unit Dimensions/Weight	11.1"L x 1.84"W x 3.52"H / 1.32 lbs
Electrical Listings	UL, cUL, CE
Alarm Contact Rating	250VAC/ 1A
Compliance & Certifications	UL 867, OSHPD Seismic (OSP), IAQP



The BGSE-150-BPIM is designed to be maintenance free, thanks to the patent-pending self-cleaning system.

Multiple installation options are possible due to the auto-detecting universal voltage input module, and the magnetic mounting tabs, which allow tool-less mounting and repositioning in the ductwork.

The system is designed for full wash-down capability without damage or deterioration.

Exclusive Worldwide Distributor

BGSE GROUP LLC
14034 Clarendon Point Court
Huntersville, NC 28078
United States of America
sales@bgsegroup.com
+1 (704) 488-0084

