

# PCAir Hose Retriever



The most advanced and innovative PCA hose retriever on the market. Design integrity and field experience has resulted in hundreds of units in service worldwide.



- ✦ **Extract only the length needed**
- ✦ **No mechanical transmission**
- ✦ **Low air pressure losses**
- ✦ **Compact size mounted close to aircraft connection**

## EXCLUSIVE FEATURES:

- ❑ Four inverter-driven motors/belts for smooth extraction and retraction without chains, gears, or rotating shafts. Strap pressure is adjustable to maximize performance in every operating set-up and environment.
- ❑ Anodized aluminum tube offers maximum corrosion resistance and an attractive aesthetic look.
- ❑ Control panel (stainless steel, protection degree IP 65), installed at ramp level, PLC maintenance display on the access door.
- ❑ Quick-release connectors to facilitate disconnection of the head or electrical panel.
- ❑ Horizontal sliding drive head to allow rapid replacement of the air delivery pipe.
- ❑ Long operating life of the air delivery hose - verified in the field to two years of operation minimum.



14034 Claredon Point Court, Huntersville, NC 28078

sales@bgsegroup.com



# PCAir Hose Retriever



## Features

### Control Panel

The control panel is installed at the ramp level and contains the fixed control devices. The connections to the gearmotors and to the limit switches are made with quick-release connectors, which allow rapid disconnection of the electrical panel and the drive head. The inverter controls the gearmotor, the extension and retraction speed of the pipe, and the intervention of the overload protection. The functionality of the hose collector is managed by a Schneider Electric PLC.



### Wireless control:

The radio control transmitter, located on the aircraft adapter, contains the extraction and retraction controls of the hose. The receiver is installed outside the electrical panel. The radio control system operates at a civil frequency of 870 MHz, and at start-up, a single communication channel is established between transmitter and receiver, preventing interference and allowing the simultaneous operation of PCAir Hose Retriever.

### Limit switches

A proximity sensor stops the fully extended hose. A pair of photocell limit switches stop the totally retracted piping.



Fixed Control Panel

Remote Control Panel

### Air delivery Hose/ Aircraft adapter

The flexible hose is fabric, coated in yellow PVC, with an internal insulating layer. The hose sections are joined at both ends by a zipper and a protective Velcro band. The BGSE COOL JET® hose retriever is equipped with a 69 ft or 92 ft (21 m or 28 m) hose; other lengths are available. The hose is fixed to the retriever on a collar by means of a band clamp.

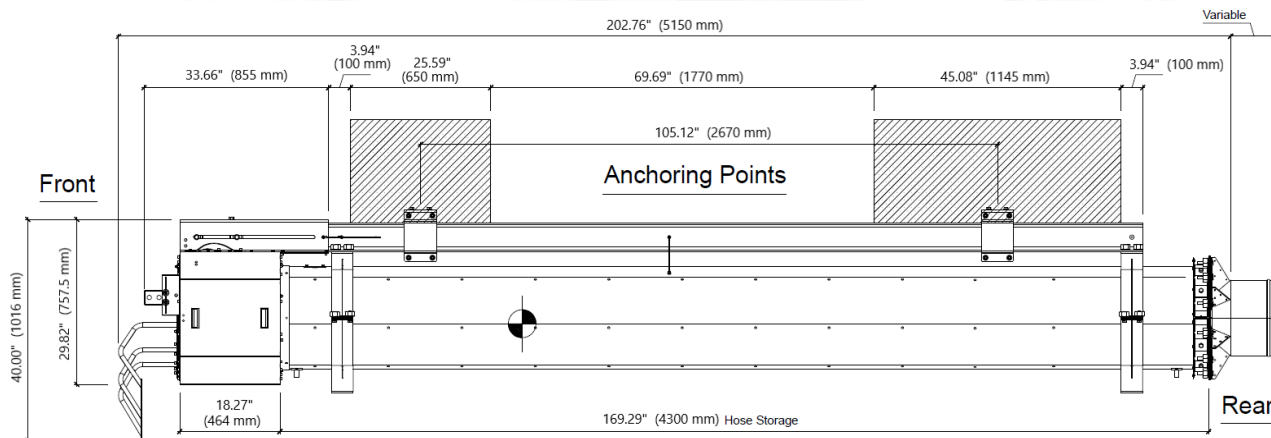


# PCAir Hose Retriever



## Technical Specifications

- Power supply: 3ph / 480V / 60Hz 6A, or 3 ph 415V / 50Hz / 7A (other options available)
- Maximum pressure drop at flow rate 330 ppm (150 kg/min): 4.7 in. WG (1,200 Pa)
- Temperature loss with full extension pipe: 3.6°F (2°C) at 95°F (35°C) 50% UR
- Control panel: IP 65 in AISI 304 stainless steel
- PLC Schneider control with door panel display
- REM Device T3 radio control panel on the aircraft adapter (other options available)
- Ion lithium battery, 1000 hr min. operating life
- Extension / retraction speed: Variable up to a maximum of 1.4 ft/s (25 m/min)
- Tension Motors powered by inverter
- Inverter overload protection with adjustable tension cut-out
- Limit switch for full extension and retraction
- Safety interlocks: PBB movement, PCA ON, panel door open
- Sound and light movement alert (option)
- Operating temperature: from -20 to + 60°C
- Noise below 60 dBA Reference standard
- Machinery Directive 2006/42 /EC, Low Voltage Directive 2006/95 /EC, EMC Compatibility, Electromagnetic Directive 2004/108 /EC, Radio and Telecommunications Directive 99/5 /EC
- Air Intertek Field Product Certification
- Double layer hose of 1100 dtex polyester coated PVC, yellow, 0.08 in. (2 mm, 5 mm optional) of internal insulation, reinforced with galvanized steel spiral, 0.2 in. (5 mm)
  - Tensile strength: 595 lb. / 2 in. (2700 N / 5 cm) per ISO 142/1
  - Thermal conductivity: 0.42 Btu/hr-in-ft<sup>2</sup>°F (0.06 W/m<sup>2</sup>K) with 0.08 in. (2 mm) insulation
  - Fire retardant characteristics: M2 / B1 / BS / B-s2-d0 / NFPA 70
  - Working pressure: 48 Inch WG 12,000 Pa
  - Test pressure: 80 Inch WG (20,000 Pa)
- Aircraft adapter: 360° swivel or equivalent
- Weight:
  - 1,102 lbs. (500 kg) with 69 ft (21 m) hose
  - 1,212 lbs. (550 kg) with 92 ft (28 m) hose



14034 Claredon Point Court, Huntersville, NC 28078

sales@bgsegroupp.com





***The #1 aviation integration company.***

WWW.BGSEGROUP.COM



14034 Clarendon Point Court, Huntersville, NC 28078 USA  
704-992-9522 | [sales@bgsegroup.com](mailto:sales@bgsegroup.com)

