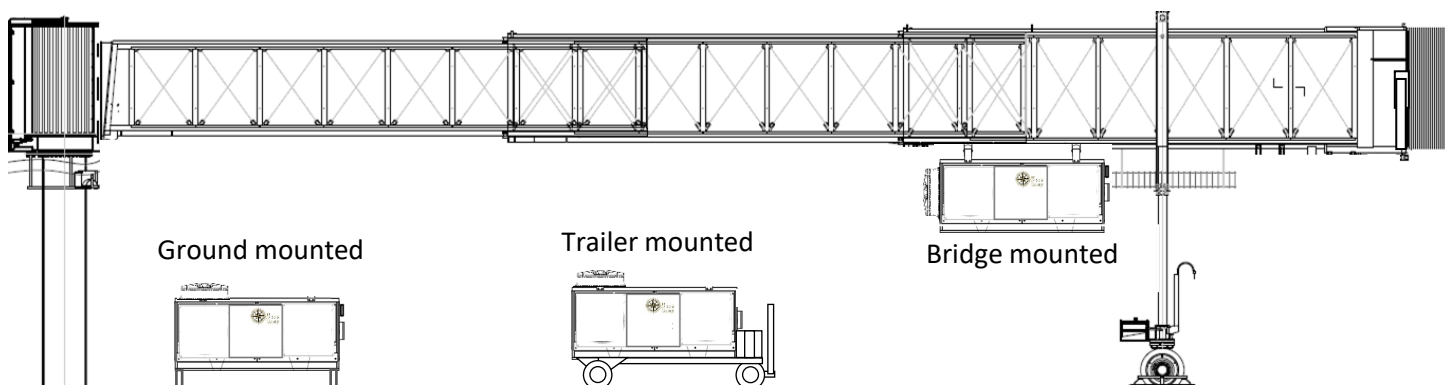
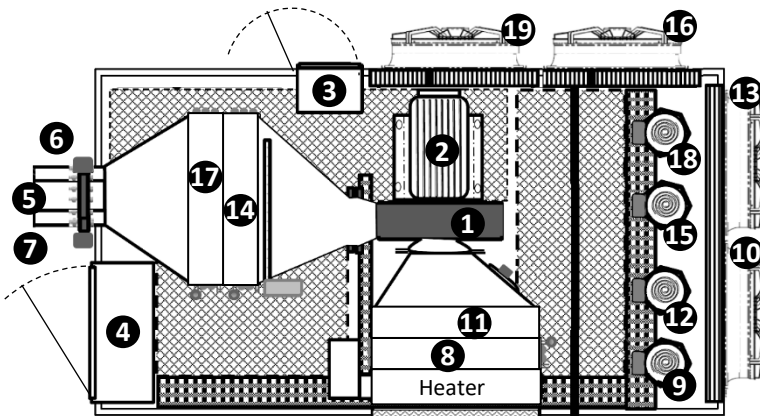


# PoU PCAir Air Cooled, Direct Expansion



- ✦ Built with the quality to last decades
- ✦ Cooling and heating performance exceeding aircraft requirements
- ✦ Customer-focused features and options, like Ionized air filtration and minimized defrost cycles

	BGAC030	BGAC045	BGAC060	BGAC090	BGAC120
1 Blower	20-hp	30-hp	40-hp	60-hp	80-hp
2 TEFC blower motor	✓	✓	✓	✓	✓
3 Blower motor VFD	✓	✓	✓	✓	✓
4 Electrical Box	✓	✓	✓	✓	✓
5 Main Air Outlet	✓	✓	✓	✓	✓
6 Optional PBB Cool Outlet	✓	✓	✓	✓	✓
7 Optional 2 <sup>nd</sup> Air Outlet			✓	✓	✓
8 Stage 1 Cooling Coil	15-ton	15-ton	15-ton	15-ton	30-ton
9 Stage 1 Compressor	15-ton	15-ton	15-ton	15-ton	30-ton
10 Condenser Fan					
11 Stage 2 Cooling Coil		15-ton	15-ton	15-ton	30-ton
12 Stage 2 Compressor		15-ton	15-ton	15-ton	30-ton
13 Condenser Fan					
14 Stage 3 Cooling Coil		15-ton	15-ton	30-ton	30-ton
15 Stage 3 Compressor		15-ton	15-ton	30-ton	30-ton
16 Condenser Fan					
17 Stage 4 Cooling Coil			15-ton	30-ton	30-ton
18 Stage 4 Compressor					
19 Condenser Fan					



**Northern-Air**  
systems

3605 BUFFALO RD  
ROCHESTER, NY 14624  
United States of America  
Phone: +1-585-594-5050  
Fax: +1-585-594-8888  
24 Hours Toll Free: +1-888-723-9230  
www.northernairsystems.com



Exclusive Worldwide Distributor

BGSE GROUP LLC  
14034 Clarendon Point Court  
Huntersville, NC 28078  
United States of America  
+1 (704) 488-0084  
sales@bgsegroupp.com

# PoU PCAir Air Cooled, Direct Expansion



<b>Design Ambient:</b>	95°F (35.0°C) dry bulb 78.0°F (25.6°C) wet bulb		<b>Ambient limits:</b> -40°F to +125°F 0%-100% RH		
	<b>BGAC030 30-ton</b>	<b>BGAC045 45-ton</b>	<b>BGAC060 60-ton</b>	<b>BGAC090 90-ton</b>	<b>BGAC120 120-ton</b>
<b>Electrical</b> (V / $\Phi$ / Hz)	480 V / 3 Ph / 60 Hz				
Cooling FLA / MCA	88 A / 95 A	135 A / 143 A	179 A / 189 A	257 A / 273 A	335 A / 356 A
Cooling ROP / MOP	100 A / 125 A	150 A / 175 A	200 A / 225 A	300 A / 350 A	400 A / 450 A
Standard Heater	36 kW	54 kW	54 kW	60 kW	90 kW
Large Heater - MCA	54 kW – 107 A	100 kW – 193 A	100 kW – 205 A	120 kW – 264 A	144 kW – 326 A
ROP / MOP	110A / 125 A	200 A / 200 A	225 A / 225 A	300 A / 350 A	400 A / 450 A
per NEC 440.33	ROP = Recommended Overcurrent Protection device based on soft-start blower. MOP = largest overcurrent protection device allowed.				
<b>Blower</b> (hp, type)	20 BHP, Centrifugal	30 BHP, Centrifugal	40 BHP, Centrifugal	60 BHP, Centrifugal	80 BHP, Centrifugal
Mass Airflow (Variable)	180 ppm @ 24 "WG	284 ppm @ 28 "WG	340 ppm @ 30 "WG	480 ppm @ 36 "WG	588 ppm @ 42 "WG
Mass Airflow (Variable)	1.36 kg/s @ 6.1 kPa	2.15 kg/s @ 7.1 kPa	2.57 kg/s @ 7.6 kPa	3.63 kg/s @ 9.2 kPa	4.45 kg/s @ 10.7 kPa
Volumetric Airflow	2,430 CFM (4126 m³/h)	3,830 CFM (6510 m³/h)	4,590 CFM (7790 m³/h)	6,480 CFM (11,000 m³/h)	7,940 CFM (13,480 m³/h)
Discharge Air Temp	24 to 40°F (-7.2 to 4.4 °C)				
Sound Level	85 dBA @ 15 Ft.				
<b>Evaporator Coils</b>	4-row				
Tube / Fin Material	Cu / Al (enhanced)				
Defrost interval	20-90 Min.				
<b>Compressors</b>	2 x 15 Tons, Scroll	3 x 15 Tons, Scroll	4 x 15 Tons, Scroll	2 x 15, 2 x 30, Scroll	4 x 30 Tons, Scroll
Refrigerant	410A				
<b>Condenser Coils</b>	4-row				
Tube / Fin Material	Cu / Al (enhanced)				
<b>Condenser Fans</b>	2 x 5 BHP	3 x 5 BHP	4 x 5 BHP	4 x 7.5 BHP	4 x 10 BHP
Diameter	36 in (905 mm)	36 in (905 mm)	36 in (905 mm)	36 in (905 mm)	36 in (905 mm)
Meets Airbus Compliance Document for Suppliers X21RP1146224_v7, Boeing Aircraft Maintenance Manuals (AMM) and Facility Planning Guides IATA AHM 974 and IATA AHM 997, AHRI-410. Labeling Process by ETL to UL-1995. Specifications subject to change without notice.					

## Optional Features:

- Single or Dual Hose Outlets + Bridge Cool
- Apron Management System Interface (Ethernet or Modbus)
- Boarding Bridge Cooling / Heating and Controls
- Delivery Hose (style / length) and Connectors
- Hose Storage and Retrieval Systems
- Coil Phenolic Coating
- Condenser Fan Motor VFDs
- Standard and High-Capacity Heating Coils
- Aircraft Cabin or Bridge Temperature Probes
- Ionizing Air Filter for microbe and odor control

**Northern-Air**  
S y s t e m s

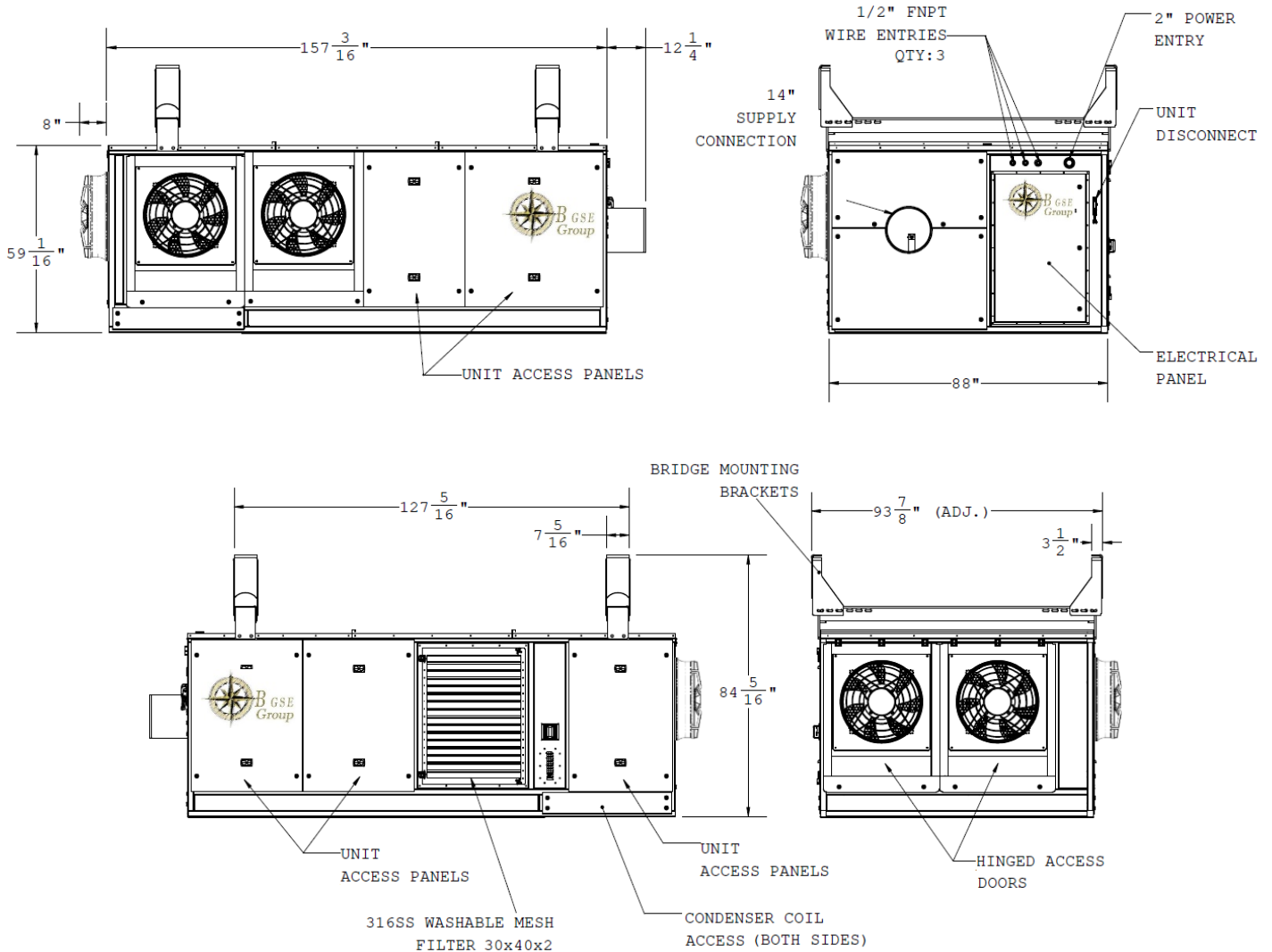
3605 BUFFALO RD  
ROCHESTER, NY 14624  
United States of America  
Phone: +1-585-594-5050  
Fax: +1-585-594-8888  
24 Hours Toll Free: +1-888-723-9230  
www.northernairsystems.com



## Exclusive Worldwide Distributor

BGSE GROUP LLC  
14034 Clarendon Point Court  
Huntersville, NC 28078  
United States of America  
+1 (704) 488-0084  
sales@bgsegroupp.com

# PoU PCAir Air Cooled, Direct Expansion



## Weight

30-ton <sup>1</sup>	3,735 lbs. (1,694 kg)
45-ton <sup>1</sup>	4,925 lbs. (2,234 kg)
60-ton <sup>1, 2</sup>	5,285 lbs. (2,561 kg)
90-ton <sup>1, 3</sup>	8,680 lbs. (3,937 kg)
120-ton <sup>1, 3</sup>	11,074 lbs. (5,023 kg)

- Condenser fans:
- 1 Qty 2, rear-mounted
  - 2 Qty 1, side-mounted
  - 3 Qty 2, side-mounted

## Exclusive Worldwide Distributor



BGSE GROUP LLC  
 14034 Clarendon Point Court  
 Huntersville, NC 28078  
 United States of America  
 +1 (704) 488-0084  
 sales@bgsegroup.com



## BGSE-150-IOM Ionization Filter

### Product Description

The BGSE-150-IOM is an autocleaning, zero-maintenance, needlepoint bipolar ionization system designed to handle up to 150 tons of airflow. The **generated ions kill and destroy microbes and odors in the airstream and the conditioned space.**

### Features

All-composite and carbon fiber construction, universal voltage input, in-line On/Off switch, programmable auto-cleaning cycle, plasma on indication light, alarm contacts, mounting magnets and replaceable carbon fiber brush emitters\*.

\*Life cycle testing shows no mechanical degradation of the carbon fiber brushes due to repeated cleaning cycles

### Options

Ion detector for one-time or real-time confirmation of delivered free ions and BAS communication of system status.

### Benefits



**Kills Pathogens (Viruses, Bacteria, Mold), Helps to Control Allergens/Asthma**



**Neutralizes Odors by destroying VOCs**



**Reduces Particles and Smoke\***

\*These statements are based on numerous customer testimonials and have not been evaluated by the FDA.

### Specifications

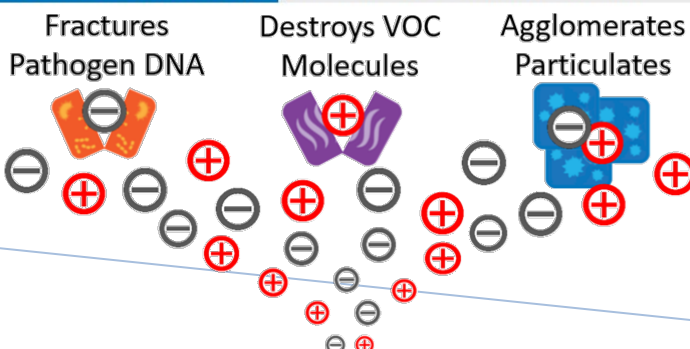
Input Voltage	24VAC to 240VAC
Amps	0.41A to 0.041A
Power	10 Watts
Frequency	50/60HZ
Total Ion Output	> 400 Million ions/cc/sec
Airflow Capacity	Up to 150 tons of airflow
Temperature/Humidity	-20°F to 200°F / 0-100% RH
Unit Dimensions/Weight	11.1"L x 1.84"W x 3.52"H / 1.32 lbs
Electrical Listings	UL, cUL, CE
Alarm Contact Rating	250VAC/ 1A
Compliance & Certifications	UL 867, OSHPD Seismic (OSP), IAQP



The BGSE-150-IOM is designed to be maintenance free, thanks to the patent-pending self-cleaning system.

Installation and adjustments are easily accomplished with the auto-detecting universal voltage input module, and the magnetic mounting tabs that allow tool-less mounting and repositioning in the ductwork.

The system has full wash-down capability without damage or deterioration.



Exclusive Worldwide Distributor

BGSE GROUP LLC  
14034 Clarendon Point Court  
Huntersville, NC 28078  
United States of America  
sales@bgsegroupp.com  
+1 (704) 488-0084